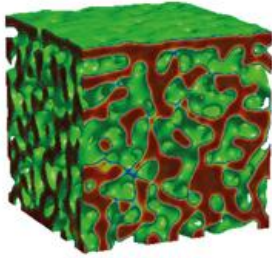


Physical Aspects of Polymer Science

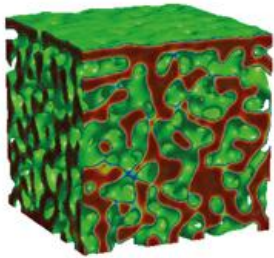
Poster Programme

- P.01 **Structural behaviour and dynamics of highly branched PNIPAm as a function of temperature**
A AL-Baradi, Taif University, Saudi Arabia
- P.02 **Switchable adhesion between pH-responsive weak polyelectrolytes**
L Alfheid, University of Sheffield, UK
- P.03 **Molecular dynamics studies of supramolecular polymer networks**
D Amin, University Of Reading, UK
- P.04 **Wavefront kinetics of plasma oxidation of polydimethylsiloxane: Implications for micropatterning size limits using wrinkling**
A Bayley, Imperial College London, UK
- P.05 **Simulations and theory of dry and wet polymer brushes**
R Bullivant, University of Reading, UK
- P.06 **Multiscale mechanics of polylactic acid and polylactic acid /halloysite composite**
J Chen, University of Newcastle, UK
- P.07 **Polymer diffusion in nanocomposites**
J Choi, University of Pennsylvania, USA
- P.08 **Flat punch nanoindentation as a probe to explore mechanical properties of thin polymer films**
M Chowdhury, Trinity College Dublin, Republic of Ireland
- P.09 **Diffusion on topographically patterned surfaces**
C Clarkson, University of Sheffield, UK
- P.10 **Physical and mechanical properties of cellulose nanocomposites - A free volume approach**
A Coveney, University of Bristol, UK
- P.11 **Processing of polymer: Fullerene blends to impact thin film morphology**
R Dattani, Imperial College London, UK
- P.12 **Relaxation processes in polymer nanocomposites**
D De Focatiis, University of Nottingham, UK
- P.13 **OTFTs manufactured by vacuum-evaporation in a R2R web-coater exploiting a flash-evaporated polymer gate dielectric**
Z Ding, University of Oxford, UK
- P.14 **Supercapacitance from carbonised cellulose nanofibres**
S Eichhorn, University of Exeter, UK
- P.15 **Thermoreversible gelation of modified cellulose ether systems: Hofmeister ion effects**
P Fairclough, University of Sheffield, UK



Physical Aspects of Polymer Science

- P.16 **Film structure formation and evolution in model multicomponent formulations**
G Ferretti, Imperial College London, UK
- P.17 **Cross-sectional imaging of organic solar cells: Understanding efficiency and lifetime issues**
T Glen University of Cambridge, UK
- P.18 **Microfluidic-SANS: Insitu molecular insight into complex fluid processing and high throughput characterization**
C Gonzalez Lopez, Imperial College London, UK
- P.19 **Conformation of cellulose based polyelectrolyte NaCMC in solution: Effect of concentration and solvent quality**
C Gonzalez Lopez, Imperial College London, UK
- P.20 **Influence of additives on nucleation and growth kinetics of conjugated polymers**
A Guilbert, Imperial College London, UK
- P.21 **Large-area patterning of the tackiness of a colloidal nanocomposite adhesive by sintering of nanoparticles under IR radiation**
R Gurney, University of Surrey, UK
- P.22 **Nanostructural investigation of poly(dimethylsiloxane) based nanocomposites: A positron annihilation lifetime study**
D Hughes, University of Bristol, UK
- P.23 **The very early stage of the crystallization of thin PET films studied by ellipsometry, AFM, and grazing incidence X-ray scattering**
M Ibaragi, University of Sheffield, UK
- P.24 **Characterisation of buried conjugated polymer interfaces by off-specular neutron reflectivity**
A Higgins, University of Swansea, UK
- P.25 **Structure, dynamics and primitive path network of polymer nanocomposites containing spherical nanoparticles**
A Karatrantos, University of Sheffield, UK
- P.26 **Water transport through polymer films: Comparison of solution, emulsion, and secondary emulsion polymers**
Y Liu, University of Surrey, UK
- P.27 **Physical characteristics and mechanical behavior of PTFE synthesized by the Spark Plasma Sintering process (SPS)**
A Mdarhri, University Cadi Ayyad-Faculty of Sciences and Techniques, Morocco
- P.28 **Elevated single polymer surface diffusion on a film near its glass transition temperature**
M Mears, University of Sheffield, UK



Physical Aspects of Polymer Science

- P.29 **Dynamics of polymer blend film formation during spin coating**
Y Mouhamad, University of Sheffield, UK
- P.30 **Templated crystallization within block copolymer lamellae**
A Nedoma, Imperial College London, UK
- P.31 **A stochastic finite element model for the dynamics of globular proteins**
R Oliver, University of Sheffield, UK
- P.32 **Molecular organisation and mobility in biopolymers: A free volume perspective**
M Roussanova, University of Bristol, UK
- P.33 **Observing the organization of polymer chains by atomic force microscopy**
R Savage, University of Sheffield, UK
- P.34 **A SANS strategy for resolving orientation of individual length scales within an oriented bimodal homopolymer blend**
O Smerdova, University of Nottingham, UK
- P.35 **Monte Carlo field-theoretic simulations for melts of symmetric diblock copolymer**
P Stasiak, University of Reading, UK
- P.36 **Interfacially active of multi hydroxy end functional polyethylenes**
R Thompson, Durham University, UK
- P.37 **Roll-to-roll deposition of highly flexible polymer-inorganic transparent gas barrier layers**
V Tobin, University of Oxford, UK
- P.38 **Structure and evolution of high-density protein systems**
J Ioannou, University of Cambridge, UK
- P.39 **Elongational rheology of linear polymers by molecular dynamics simulations**
N Withey, University of Reading, UK
- P.40 **Morphological and device stabilisation of Fullerene-based solar cells by light processing**
H C Wong, Imperial College London, UK
- P.41 **PAMAM-Functionalized surface-assembly of gold nanoparticles and their surface-enhanced raman scattering spectroscopy**
L Yang, Beijing Institute of Graphic Communication, China
- P.42 **Adsorption and diffusion of single molecules on polymer brushes**
Z Zhang, University of Sheffield, UK
- P.43 **Nano-tribological properties of polymer brushes**
Z Zhang, University of Sheffield, UK
- P.44 **Surface roughening of PET film by surface spinodal decomposition using melt blending process**
A Rezaei Kolahchi, Polytechnique Montreal, Canada